



ELIADE 9

Your own 7★



CONTENTS

| | |
|----------------------------------|----|
| 1. Concept | 4 |
| 2. Location | 6 |
| 3. Proximities & Access | 8 |
| 4. Interiors | 10 |
| 5. Floor Plans & Apartments list | 34 |





CONCEPT

Hagag Development Europe proudly presents H Eliade 9, one of a kind residential landmark in a prime location. The building will feature an innovative smart-home concept integrated into a unique architectural design of 35 apartments, featuring private gardens or terraces, and 62 underground parking spaces. The ground floor of the building will serve as a spacious reception lobby, filled with natural light, under a spectacular vertical atrium, designed and inspired by high-quality materials, mixing the warmth of lights and wood with the stability of stone. The residence will also offer a secured entrance and a wide variety of 24/7 concierge services, to take care of all your needs, for your own 7★ experience.





LOCATION

H Eliade 9 is a unique luxury residential building remarkably located on Mircea Eliade Boulevard in the prestigious Primăverii neighborhood, in the northern part of Bucharest. The area is mostly renowned for its outstanding luxury residential projects.

The building will consist of premium finishes and modern design, smartly positioned to bring in natural light and fresh air throughout the day.





PROXIMITIES & ACCESS

Mircea Eliade Boulevard, one of the most famous areas in Bucharest, offers an exclusive residential environment and quality living. Thanks to its privileged location, impressive architecture and unique projects, it is the place to enjoy some of the most popular restaurants and cafes, schools, museums, entertainment areas and much more. It is within walking distance from one of Bucharest's biggest green jewels, King Michael I Park formerly known as Herăstrău.

The building can be accessed directly from Mircea Eliade Blvd.



INTERIORS

H Eliade 9 will feature an exclusive modern design, high-end finishes and premium construction materials, to provide the best thermal modeling as well as phonic isolation and extensive daylight. All apartments will be equipped with modern smart-home technology, that will allow easy access and control over all the facilities that your home has to offer; from letting natural light wake you up in your preferred morning hour, to having your coffee machine prepare your favorite drink even before you got out from bed, as well as controlling the sound system and dimming the lights however you would like. All integrated into one place for your own 7★ experience.



Your own 7★ H Eliade 9

YOUR OWN 7★ LIVING ROOM

Wood flooring, spacious areas, high frameless filomuro doors and aluminum profiles will facilitate your living room with everything you need to enjoy it with your loved ones. The extensive use of large glass surfaces is designed to offer an efficient transition from indoor to outdoor spaces, offering plenty of natural light, feeling of freedom and continuity.



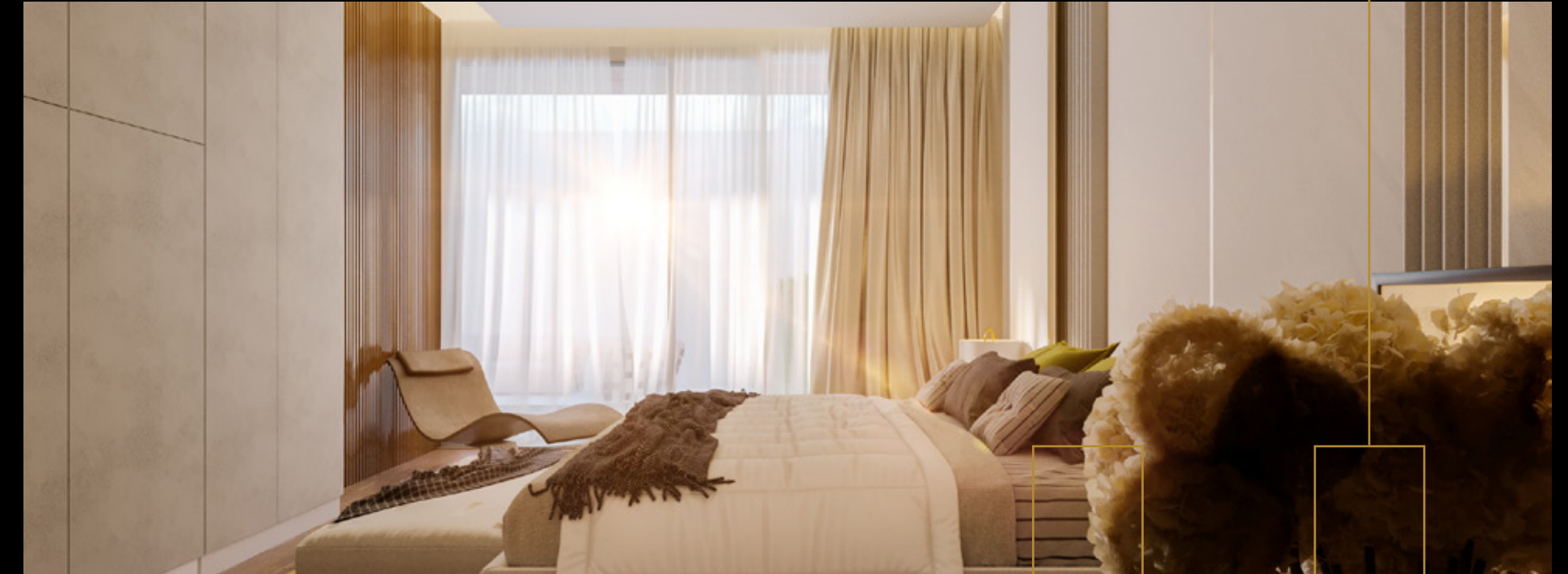
Exclusive design for an exclusive experience



YOUR OWN 7★ BEDROOM

The spacious bedroom touched by the sun's rays, the breeze blowing through the wide-open windows and the late mornings in a quiet neighborhood are the key elements of a successful weekend.

Every bedroom is planned as an exclusive hotel suite and offers a private bathroom as well as a spacious walk-in dressing room that fits perfectly into the high-end concept of the apartment.



The bedroom of your own 7 hotel experience*



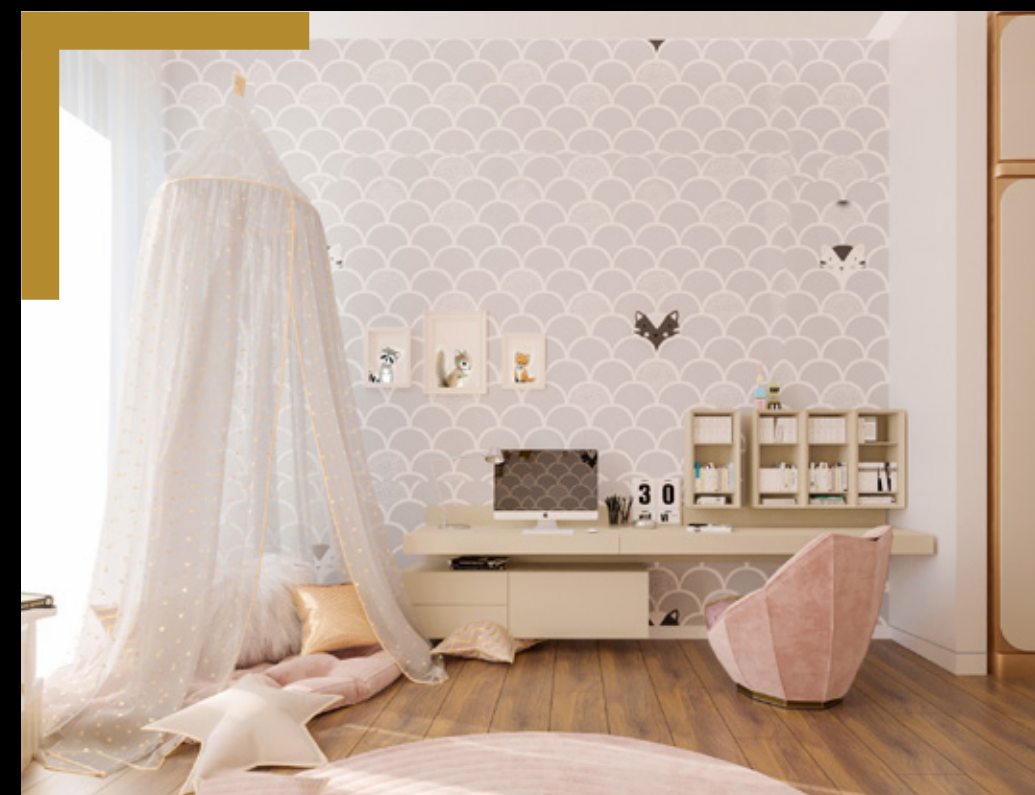
YOUR OWN 7★ CHILDREN'S ROOM

From the cozy bed to the art and books, the children's room is where the stories of heroes come to life.

Let yourself get carried away into a fairy tale with your child and teach him to dream of dragons and princesses in a modern, spacious, brightly colored room.



Premium experience in every detail



YOUR OWN 7★ KITCHEN

Modern finishes, non-slip surfaces, large windows and futuristic design elements will inspire you in cooking the most unique international dishes to share with your family and friends.



The highest standards for interior finishes



YOUR OWN 7★ BATHROOM

Spacious bathrooms in the privacy of every room will invite you to enjoy the aroma of a scented candle, the diffused light and your favorite music in the background, to outline the ideal setting in which you can relax and enjoy your free time in peace.



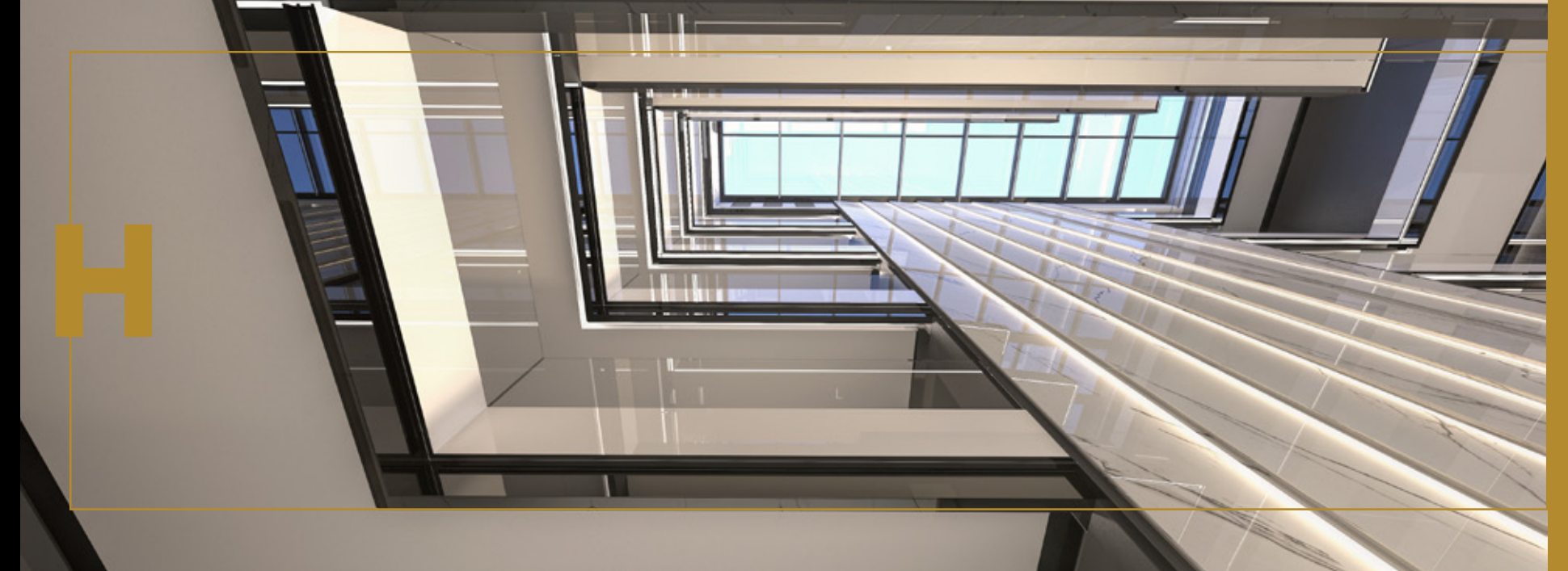
Everything you ever dreamed of



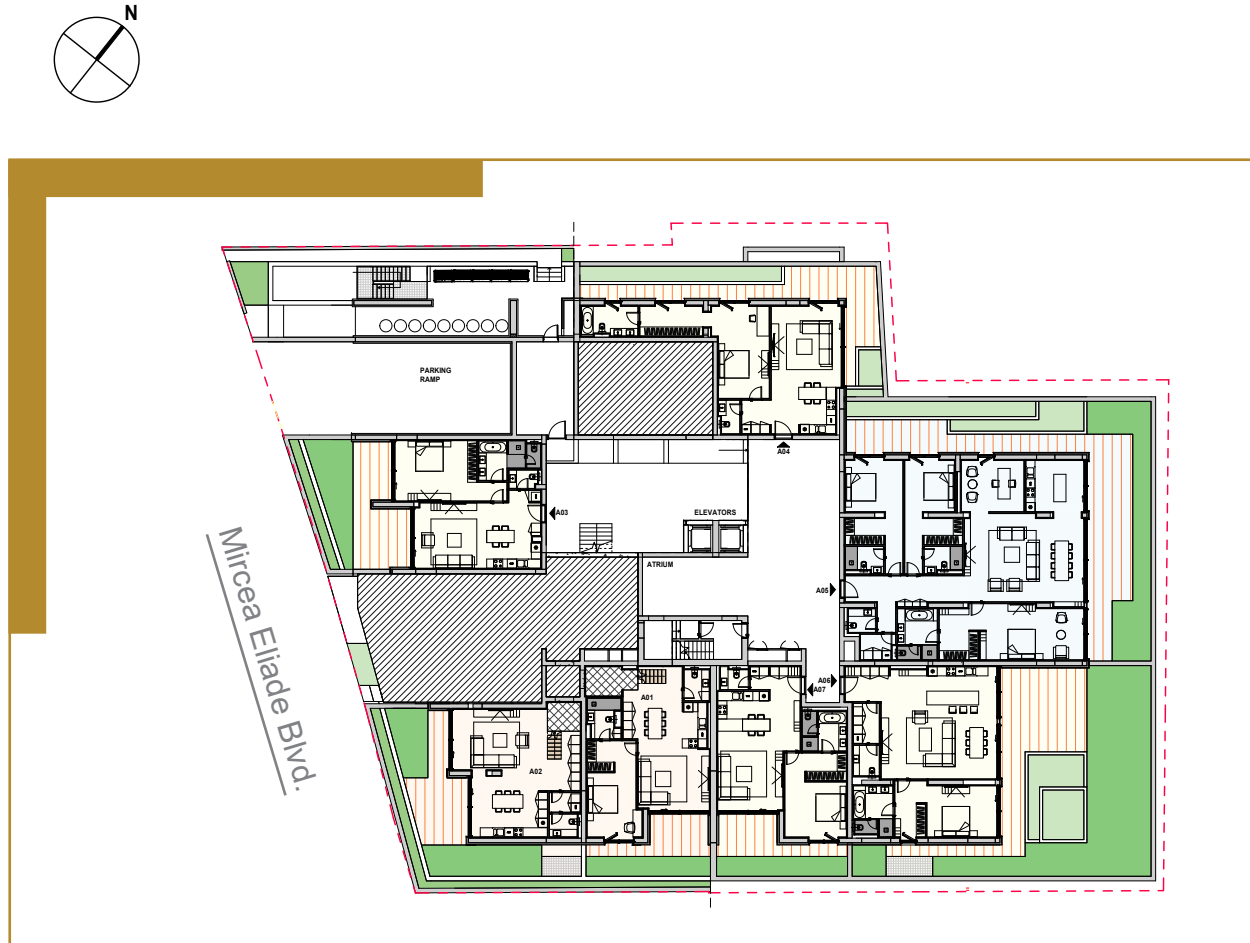
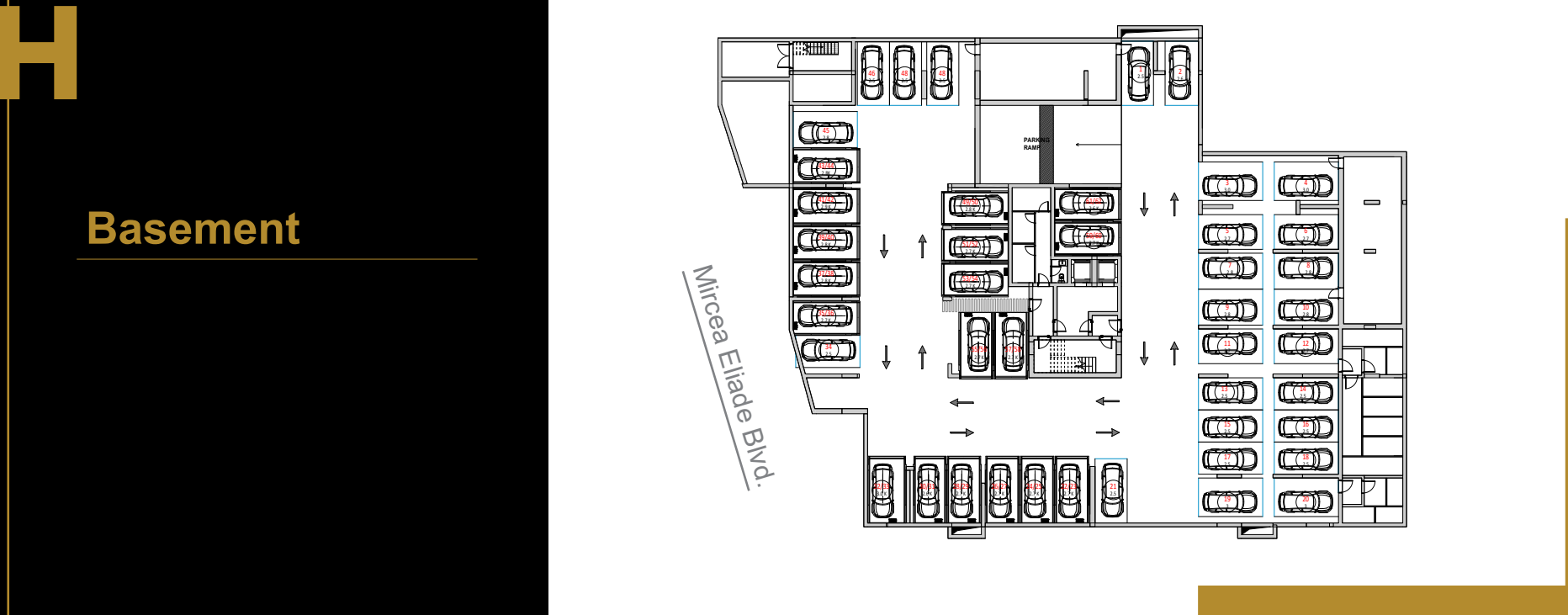
SMART-HOME CONCEPT

Smart-home concept technology of H Eliade 9 refers to a set of devices, appliances and systems that connect into a common network that can be independently and remotely controlled.

Make your own 7* experience easy with the newest tech developments!



Floor plans



Semi-basement

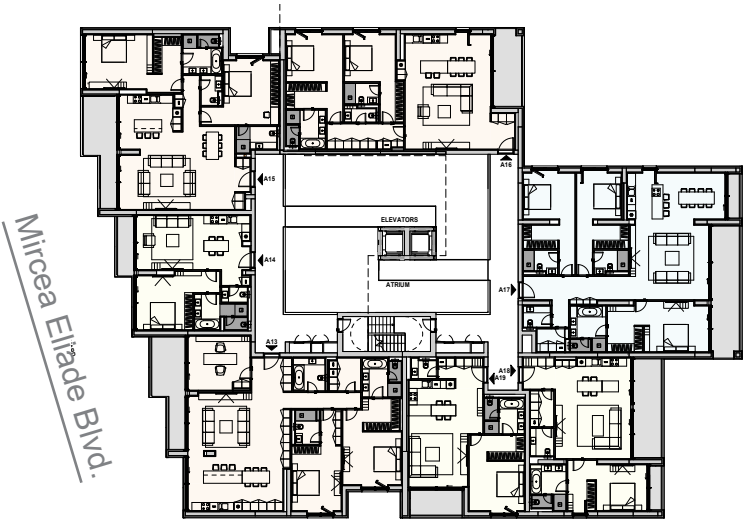
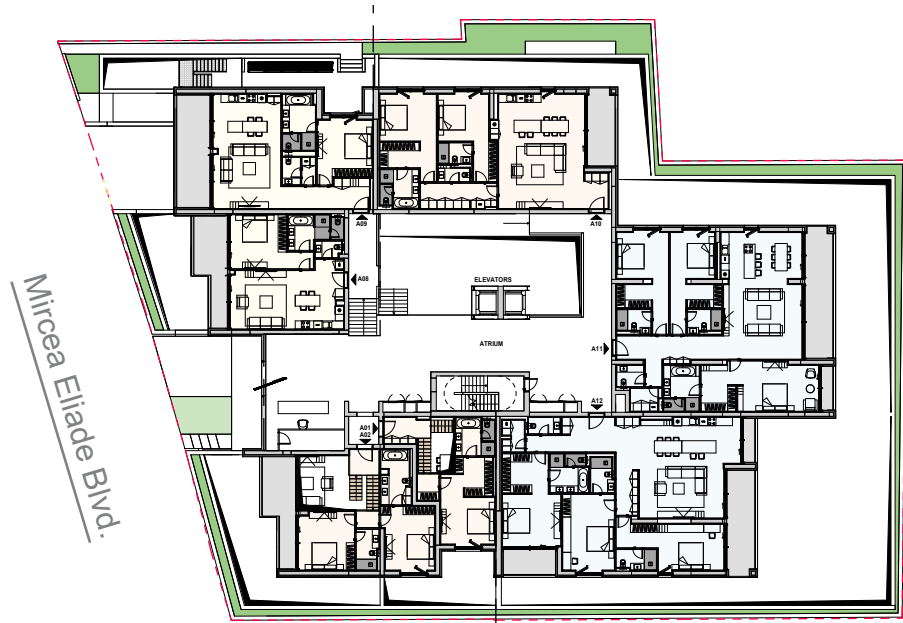
| APARTMENT | TOTAL BUILT AREA |
|-----------|------------------|
| A01 | 168.26 sqm |
| A02 | 248.14 sqm |
| A03 | 135.09 sqm |
| A04 | 173.20 sqm |
| A05 | 379.39 sqm |
| A06 | 295.52 sqm |
| A07 | 122.41 sqm |

Floor plans

H

Ground floor

| APARTMENT | TOTAL BUILT AREA |
|-----------|------------------|
| A01 | 168.26 sqm |
| A02 | 248.14 sqm |
| A08 | 95.69 sqm |
| A09 | 127.85 sqm |
| A10 | 160.62 sqm |
| A11 | 224.35 sqm |
| A12 | 225.37 sqm |



1st floor

| APARTMENT | TOTAL BUILT AREA |
|-----------|------------------|
| A13 | 208.95 sqm |
| A14 | 84.49 sqm |
| A15 | 178.12 sqm |
| A16 | 161.28 sqm |
| A17 | 224.71 sqm |
| A18 | 119.46 sqm |
| A19 | 99.53 sqm |

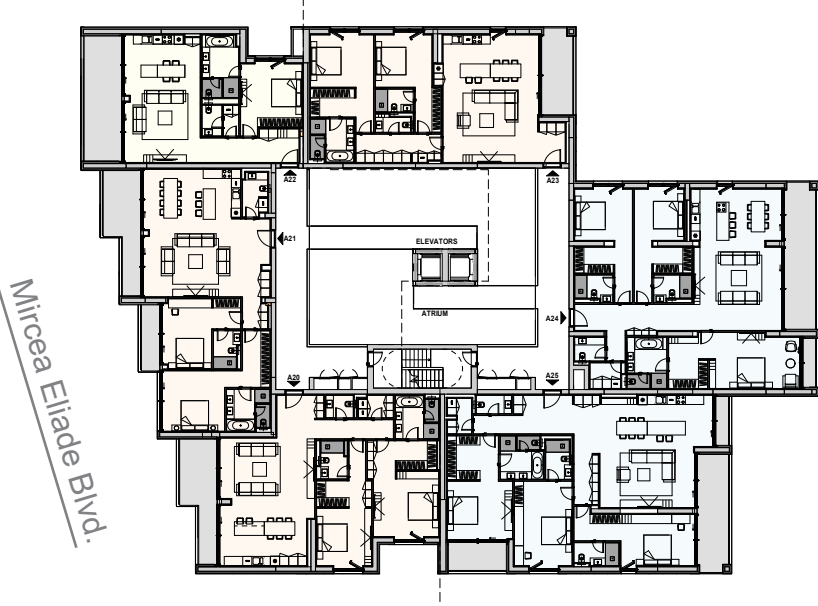
H

Floor plans

H

2nd floor

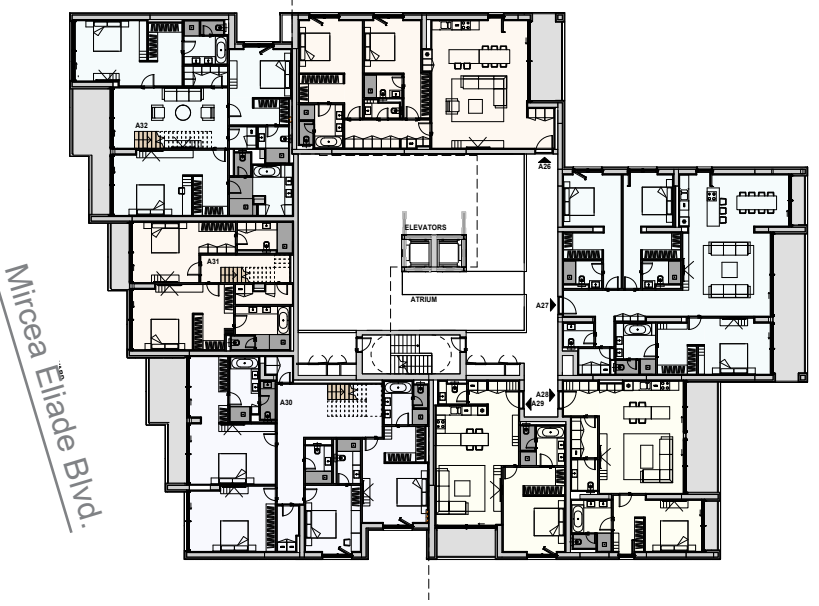
| APARTMENT | TOTAL BUILT AREA |
|-----------|------------------|
| A20 | 175.94 sqm |
| A21 | 168.68 sqm |
| A22 | 127.76 sqm |
| A23 | 161.00 sqm |
| A24 | 224.35 sqm |
| A25 | 225.37 sqm |



H

3rd floor

| APARTMENT | TOTAL BUILT AREA |
|-----------|------------------|
| A26 | 160.64 sqm |
| A27 | 224.71 sqm |
| A28 | 119.46 sqm |
| A29 | 98.74 sqm |
| A30 | 464.05 sqm |
| A31 | 200.26 sqm |
| A32 | 305.52 sqm |

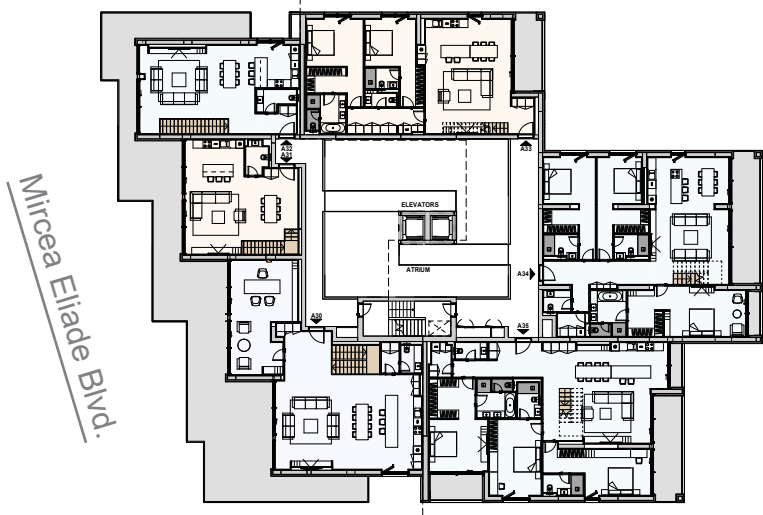


Floor plans

H

4th floor

| APARTMENT | TOTAL BUILT AREA |
|-----------|------------------|
| A30 | 464.05 sqm |
| A31 | 200.26 sqm |
| A32 | 305.52 sqm |
| A33 | 312.78 sqm |
| A34 | 459.62 sqm |
| A35 | 441.81 sqm |



H

Rooftop Terrace

| APARTMENT | TOTAL BUILT AREA |
|-----------|------------------|
| A33 | 312.78 sqm |
| A34 | 469.62 sqm |
| A35 | 441.81 sqm |



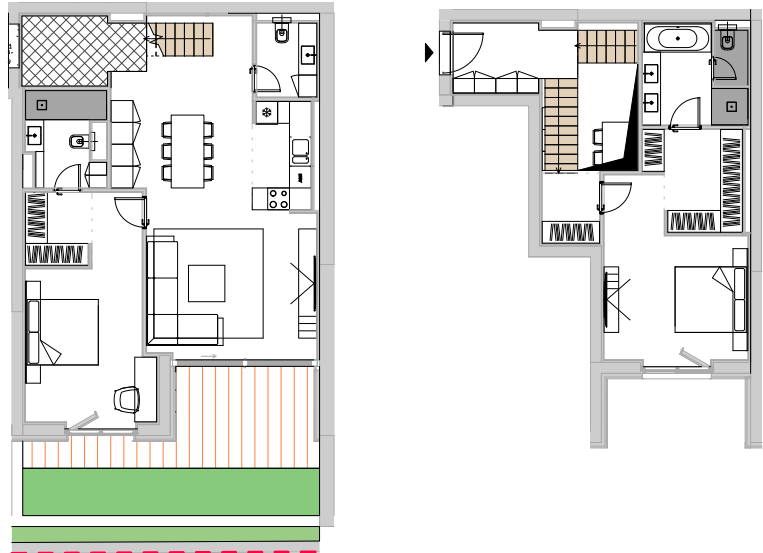
Semi-basement Apartments

H

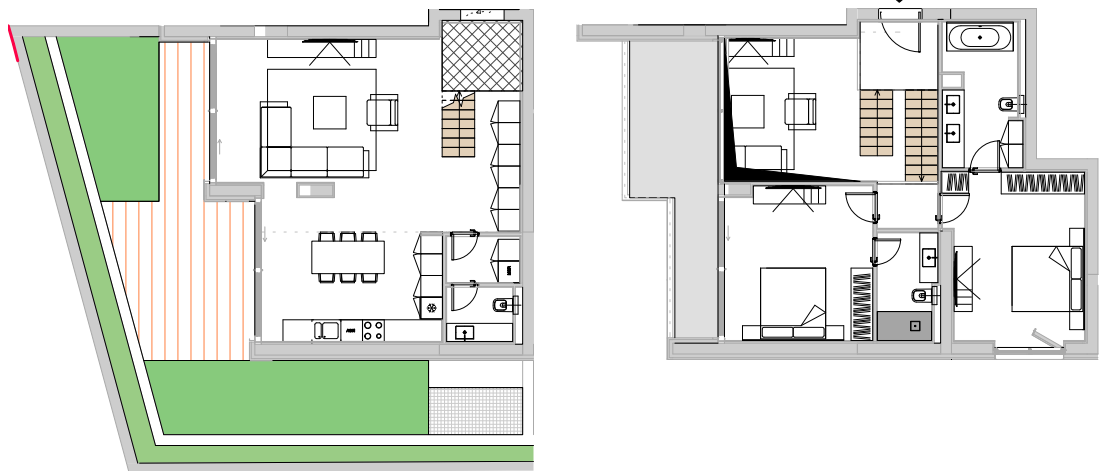
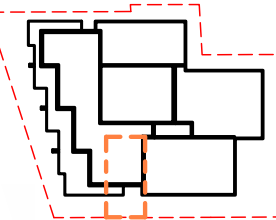
Apartment no. 1

Semi-basement / Ground floor Duplex
2 bedrooms

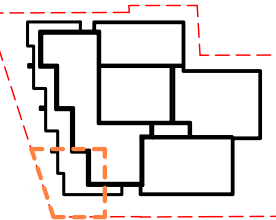
| | |
|--------------------------|-------------------|
| AP. BUILT AREA: | 136.23 sqm |
| AP. USABLE AREA: | 112.87 sqm |
| GARDEN BUILT AREA: | 32.03 sqm |
| GARDEN USABLE AREA: | 24.50 sqm |
| TOTAL BUILT AREA: | 168.26 sqm |



A spacious semi-basement / ground-floor 2 bedroom Duplex, with a private garden.



A semi-basement / ground-floor 2 bedroom Duplex with a beautiful garden and a large terrace to call your own.



Apartment no. 2

Semi-basement / Ground floor Duplex
2 bedrooms

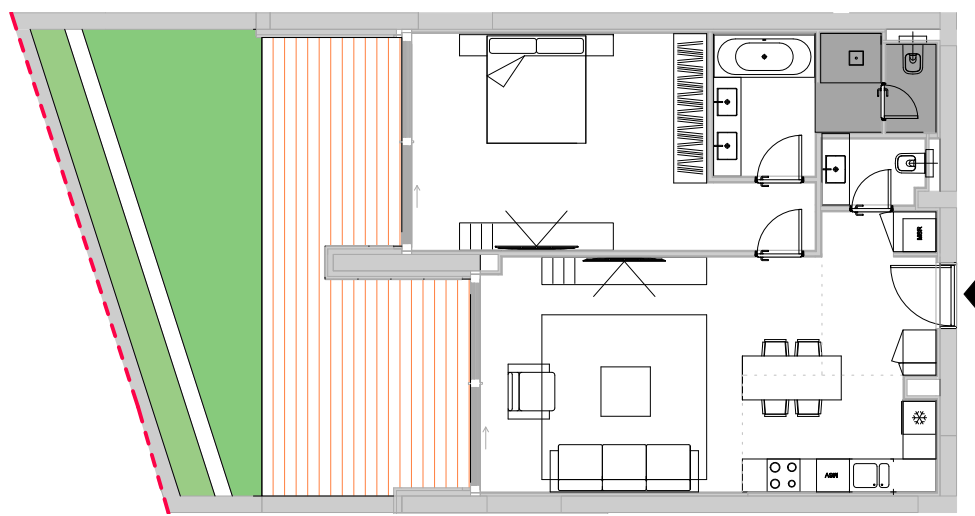
| | |
|--------------------------|-------------------|
| AP. BUILT AREA: | 156.77 sqm |
| AP. USABLE AREA: | 112.30 sqm |
| TERRACE BUILT AREA: | 17.92 sqm |
| TERRACE USABLE AREA: | 16.32 sqm |
| GARDEN BUILT AREA: | 73.45 sqm |
| GARDEN USABLE AREA: | 53.15 sqm |
| TOTAL BUILT AREA: | 248.14 sqm |

Semi-basement Apartments

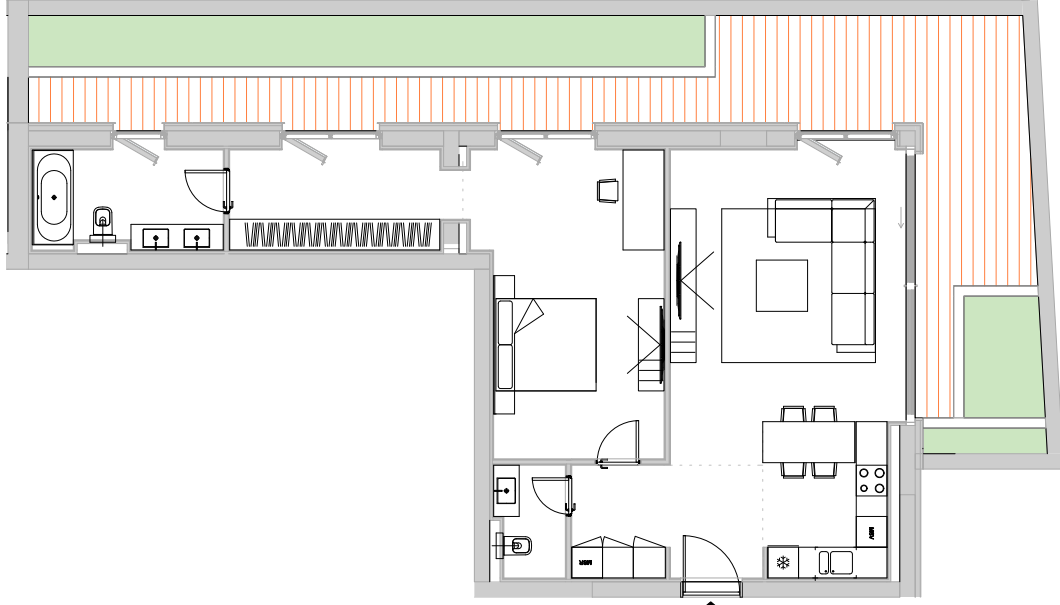
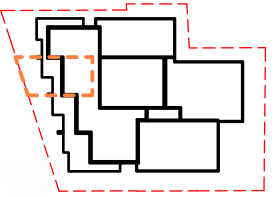
H

Apartment no. 3

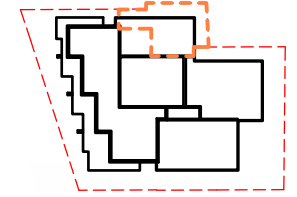
| | |
|----------------------------|-------------------|
| Semi-basement 1 bedroom | |
| AP. BUILT AREA: | 82.43 sqm |
| AP. USABLE AREA: | 71.03 sqm |
| GARDEN BUILT AREA: | 52.66 sqm |
| GARDEN USABLE AREA: | 41.36 sqm |
| TOTAL BUILT AREA: | 135.09 sqm |



A semi-basement 1 bedroom apartment with the garden of your dreams included.



A semi-basement 1 bedroom apartment with a large garden designed for your comfort and needs.



Apartment no. 4

| | |
|----------------------------|------------------|
| Semi-basement 1 bedroom | |
| AP. BUILT AREA: | 104.7 sqm |
| AP. USABLE AREA: | 81.24 sqm |
| GARDEN BUILT AREA: | 68.5 sqm |
| GARDEN USABLE AREA: | 55.35 sqm |
| TOTAL BUILT AREA: | 173.2 sqm |

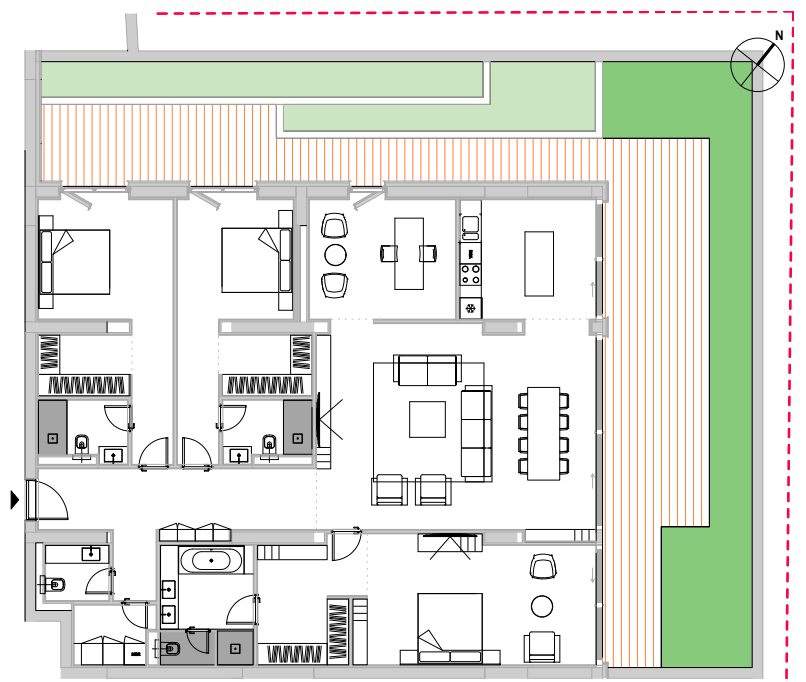
H

Semi-basement Apartments

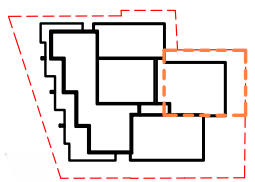
H

Apartment no. 5

| | |
|--------------------------|-------------------|
| Semi-basement | |
| 3 bedrooms | |
| AP. BUILT AREA: | 221.97 sqm |
| AP. USABLE AREA: | 186.51 sqm |
| GARDEN BUILT AREA: | 157.42 sqm |
| GARDEN USABLE AREA: | 122.12 sqm |
| TOTAL BUILT AREA: | 379.39 sqm |



A semi-basement 3 bedroom luxury apartment with top-of-the-line design and an exquisite garden that will satisfy the most pretentious needs.



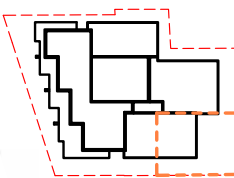
Semi-basement Apartments

H

Apartment no. 6

| | |
|--------------------------|-------------------|
| Semi-basement | |
| 1 bedroom | |
| AP. BUILT AREA: | 118.35 sqm |
| AP. USABLE AREA: | 99.55 sqm |
| GARDEN BUILT AREA: | 177.17 sqm |
| GARDEN USABLE AREA: | 153.84 sqm |
| TOTAL BUILT AREA: | 295.52 sqm |

A semi-basement 1 bedroom apartment with premium finishes carefully connected to the beating heart of a beautiful private garden.

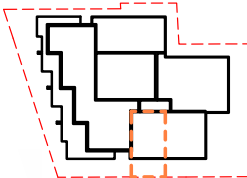


H

Apartment no. 7

| | |
|--------------------------|-------------------|
| Semi-basement | |
| 1 bedroom | |
| AP. BUILT AREA: | 89.57 sqm |
| AP. USABLE AREA: | 74.8 sqm |
| GARDEN BUILT AREA: | 32.84 sqm |
| GARDEN USABLE AREA: | 25.37 sqm |
| TOTAL BUILT AREA: | 122.41 sqm |

A semi-basement 1 bedroom apartment with large windows, lots of natural light and the best view of your own garden.

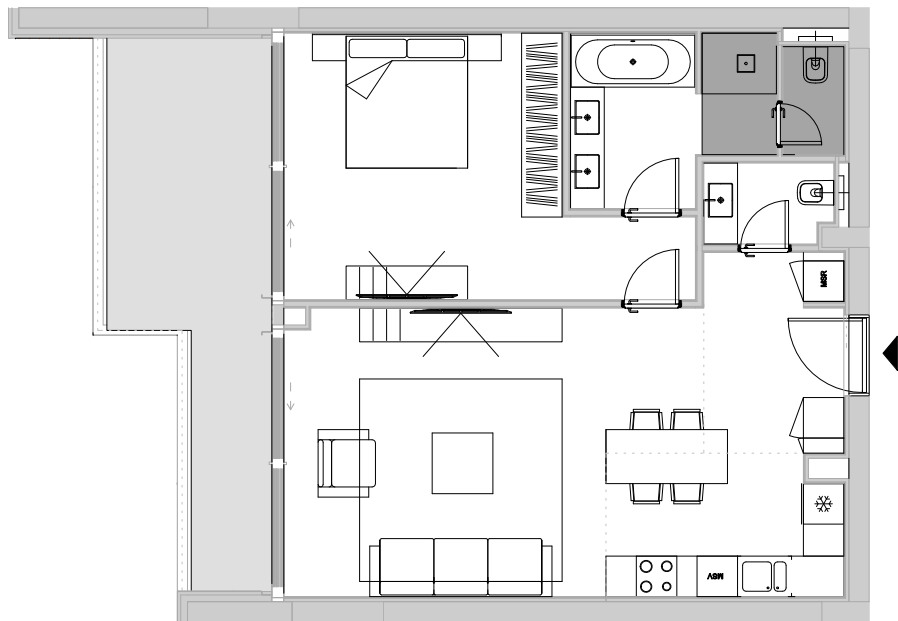


Ground floor Apartments

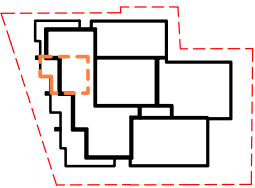
H

Apartment no. 8

| | |
|--------------------------|------------------|
| Ground floor | |
| 1 bedroom | |
| AP. BUILT AREA: | 77.36 sqm |
| AP. USABLE AREA: | 66.15 sqm |
| TERRACE BUILT AREA: | 18.33 sqm |
| TERRACE USABLE AREA: | 16.32 sqm |
| TOTAL BUILT AREA: | 95.69 sqm |



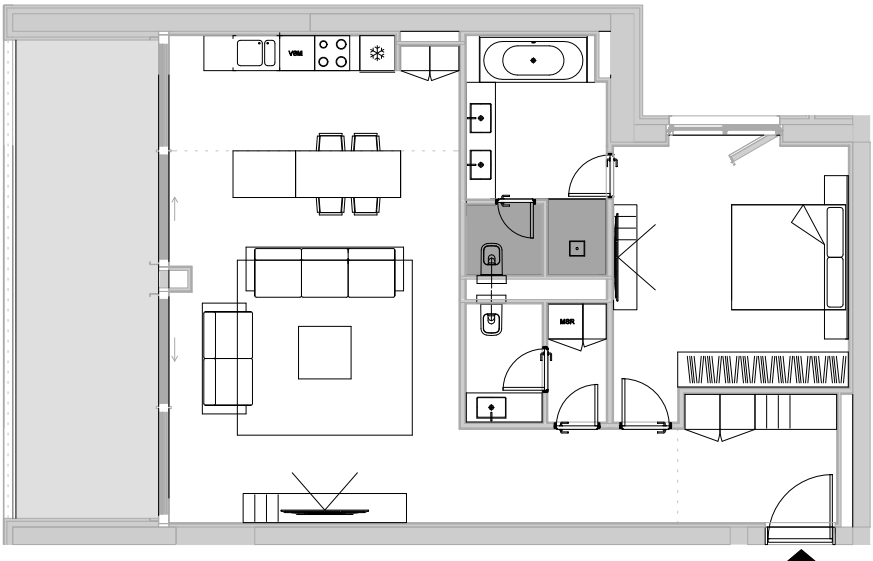
A ground floor 1 bedroom apartment with stunning finishes and a large terrace.



H

Apartment no. 9

| | |
|--------------------------|-------------------|
| Ground floor | |
| 1 bedroom | |
| AP. BUILT AREA: | 103.26 sqm |
| AP. USABLE AREA: | 86.05 sqm |
| TERRACE BUILT AREA: | 24.59 sqm |
| TERRACE USABLE AREA: | 22.59 sqm |
| TOTAL BUILT AREA: | 127.85 sqm |



A ground floor 1 bedroom apartment with a lovely terrace where you can find your inner peace after a busy day.

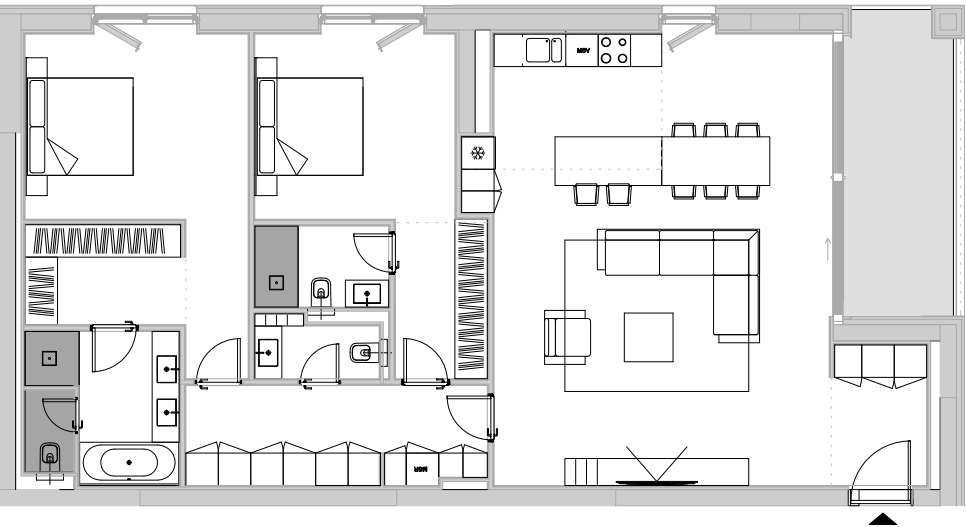


Ground floor Apartments

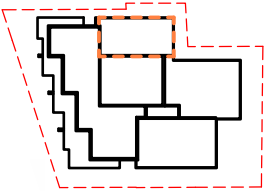
H

Apartment no. 10

| | |
|--------------------------|-------------------|
| Ground floor | |
| 2 bedrooms | |
| AP. BUILT AREA: | 147.68 sqm |
| AP. USABLE AREA: | 122.76 sqm |
| TERRACE BUILT AREA: | 12.94 sqm |
| TERRACE USABLE AREA: | 12.02 sqm |
| TOTAL BUILT AREA: | 160.62 sqm |



A ground floor 2 bedroom luxury apartment with a beautiful terrace to enjoy your breakfast or a cup of tea.



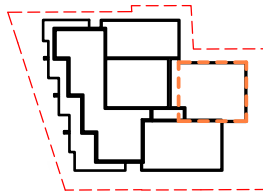
H

Apartment no. 11

| | |
|--------------------------|-------------------|
| Ground floor | |
| 3 bedrooms | |
| AP. BUILT AREA: | 197.91 sqm |
| AP. USABLE AREA: | 164.67 sqm |
| TERRACE BUILT AREA: | 26.44 sqm |
| TERRACE USABLE AREA: | 23.79 sqm |
| TOTAL BUILT AREA: | 224.35 sqm |



A ground floor large 3 bedroom apartment providing all the space you need and a private terrace.



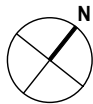
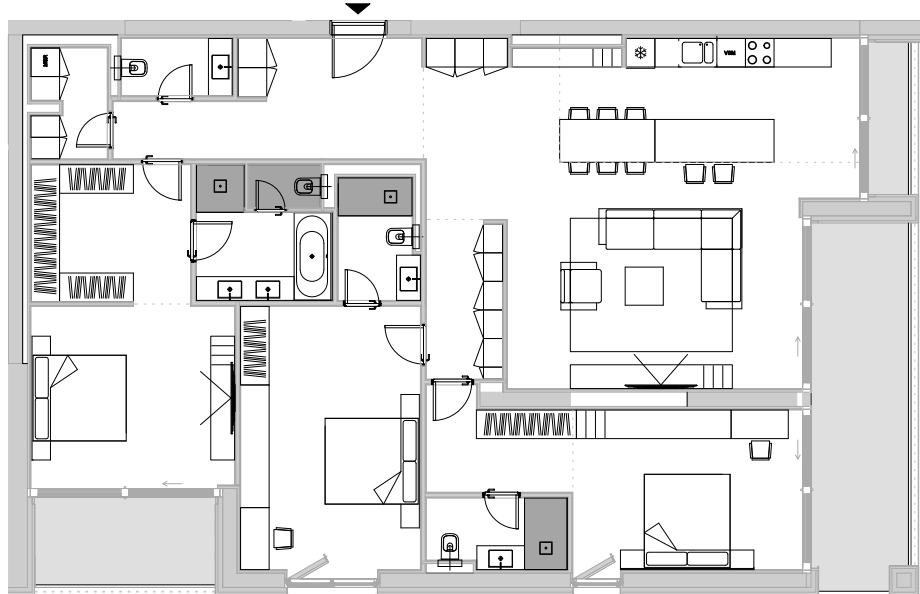
Ground floor Apartments

H

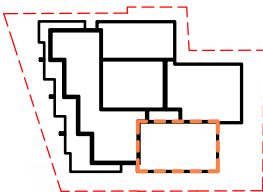
Apartment no. 12

Ground floor
3 bedrooms

| | |
|--------------------------|-------------------|
| AP. BUILT AREA: | 194.66 sqm |
| AP. USABLE AREA: | 165.46 sqm |
| TERRACE BUILT AREA: | 30.71 sqm |
| TERRACE USABLE AREA: | 27.14 sqm |
| TOTAL BUILT AREA: | 225.37 sqm |



A ground floor 3 bedroom apartment which will serve you like no other, making your life so much better thanks to the exquisite amenities and your own terrace.



1st floor Apartments

H

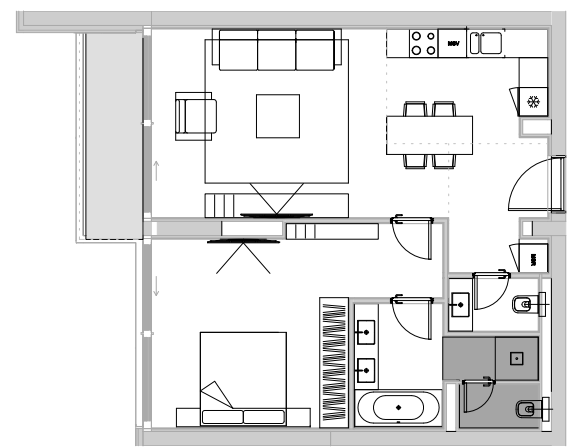
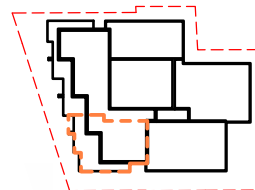
Apartment no. 13

1st floor
3 bedrooms

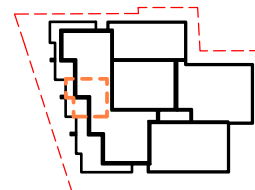
| | |
|--------------------------|-------------------|
| AP. BUILT AREA: | 191.20 sqm |
| AP. USABLE AREA: | 161.99 sqm |
| TERRACE BUILT AREA: | 17.75 sqm |
| TERRACE USABLE AREA: | 16.32 sqm |
| TOTAL BUILT AREA: | 208.95 sqm |



1st floor 3 bedroom luxury apartment and a terrace, designed by world-class professionals for your own 7-star experience.



1st floor 1 bedroom luxury apartment with private terrace and all the facilities that will give your home a premium touch.



Apartment no. 14

1st floor
1 bedroom

| | |
|--------------------------|------------------|
| AP. BUILT AREA: | 78.35 sqm |
| AP. USABLE AREA: | 64.45 sqm |
| TERRACE BUILT AREA: | 6.14 sqm |
| TERRACE USABLE AREA: | 5.76 sqm |
| TOTAL BUILT AREA: | 84.49 sqm |

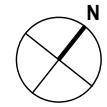
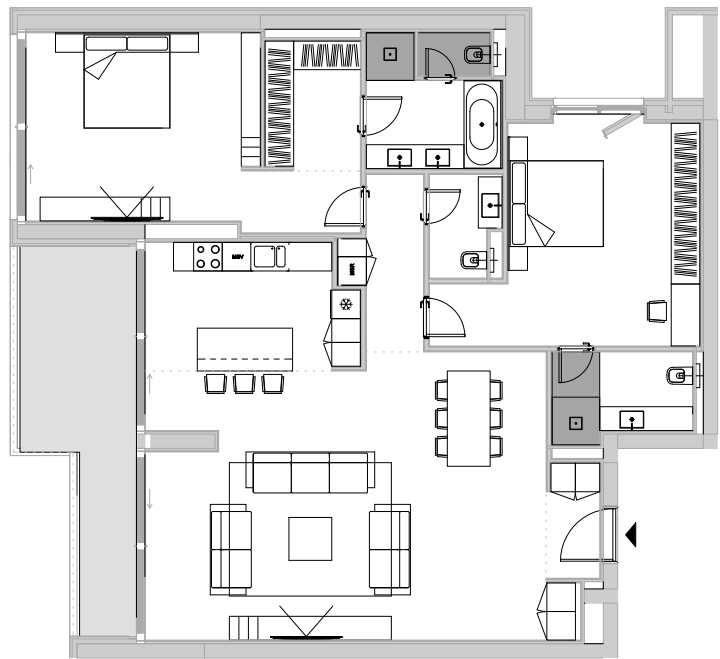
1st floor Apartments

H

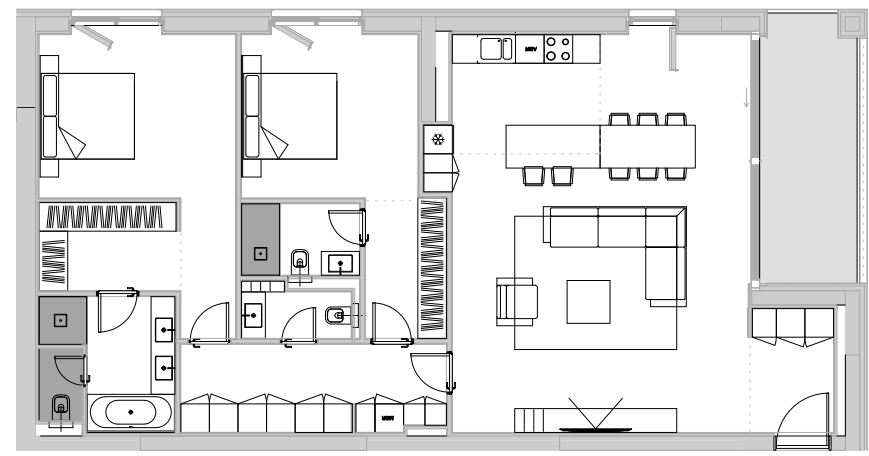
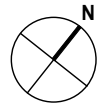
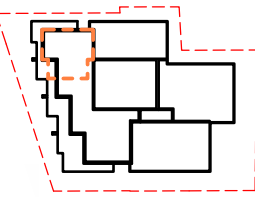
Apartment no. 15

1st floor
2 bedrooms

| | |
|--------------------------|-------------------|
| AP. BUILT AREA: | 160.30 sqm |
| AP. USABLE AREA: | 133.32 sqm |
| TERRACE BUILT AREA: | 17.82 sqm |
| TERRACE USABLE AREA: | 16.32 sqm |
| TOTAL BUILT AREA: | 178.12 sqm |



1st floor unique 2 bedroom apartment with a private terrace.

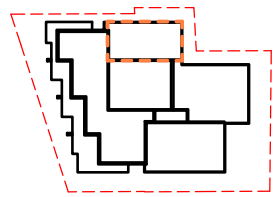


Apartment no. 16

1st floor
2 bedrooms

| | |
|--------------------------|-------------------|
| AP. BUILT AREA: | 148.34 sqm |
| AP. USABLE AREA: | 122.76 sqm |
| TERRACE BUILT AREA: | 12.94 sqm |
| TERRACE USABLE AREA: | 12.02 sqm |
| TOTAL BUILT AREA: | 161.28 sqm |

1st floor 2 bedroom apartment with terrace and high-end finishes that define a true luxury life.



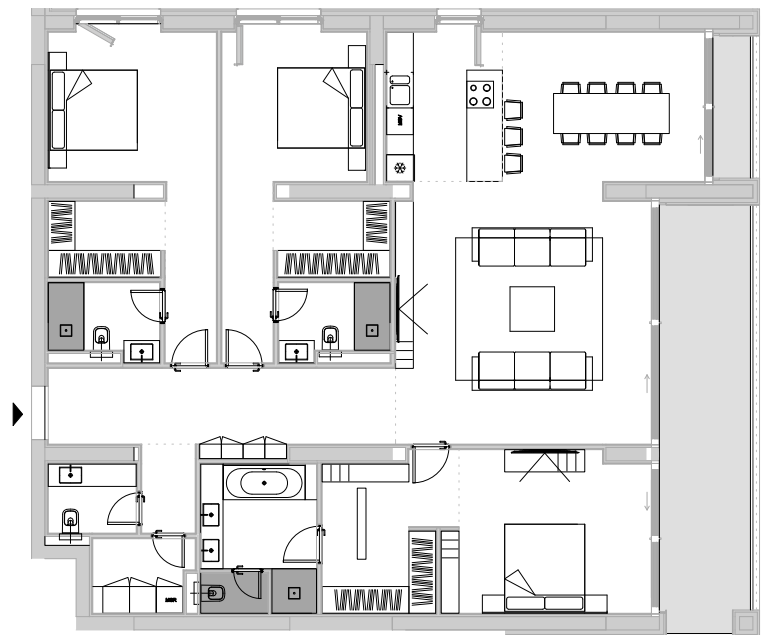
1st floor Apartments

H

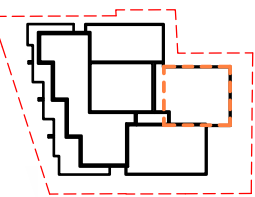
Apartment no. 17

1st floor
3 bedrooms

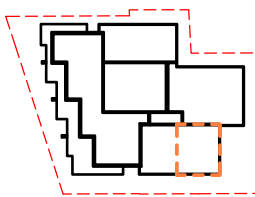
| | |
|--------------------------|-------------------|
| AP. BUILT AREA: | 198.27 sqm |
| AP. USABLE AREA: | 164.69 sqm |
| TERRACE BUILT AREA: | 26.44 sqm |
| TERRACE USABLE AREA: | 23.77 sqm |
| TOTAL BUILT AREA: | 224.71 sqm |



1st floor 3 bedroom amazing apartment with terrace combining extravagance with comfort and convenience.



1st floor 1 bedroom apartment equipped with all the modern facilities for the journey of a lifetime and a private terrace.



Apartment no. 18

1st floor
1 bedroom

| | |
|--------------------------|-------------------|
| AP. BUILT AREA: | 98.64 sqm |
| AP. USABLE AREA: | 81.31 sqm |
| TERRACE BUILT AREA: | 20.82 sqm |
| TERRACE USABLE AREA: | 18.82 sqm |
| TOTAL BUILT AREA: | 119.46 sqm |

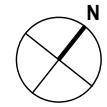
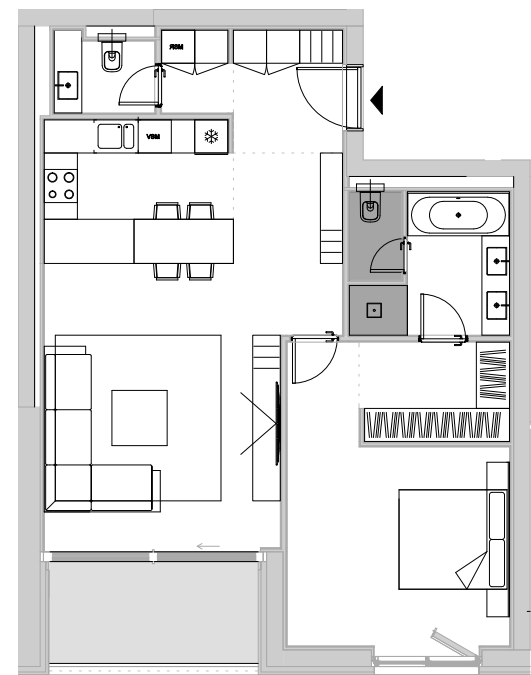
1st floor Apartments

H

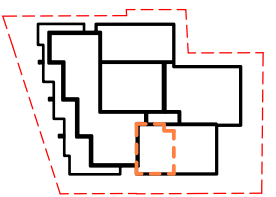
Apartment no. 19

1st Floor
1 bedroom

| | |
|--------------------------|------------------|
| AP. BUILT AREA: | 90.40 sqm |
| AP. USABLE AREA: | 74.77 sqm |
| TERRACE BUILT AREA: | 9.13 sqm |
| TERRACE USABLE AREA: | 7.52 sqm |
| TOTAL BUILT AREA: | 99.53 sqm |



1st floor 1 bedroom apartment with top of the art design and a private terrace.

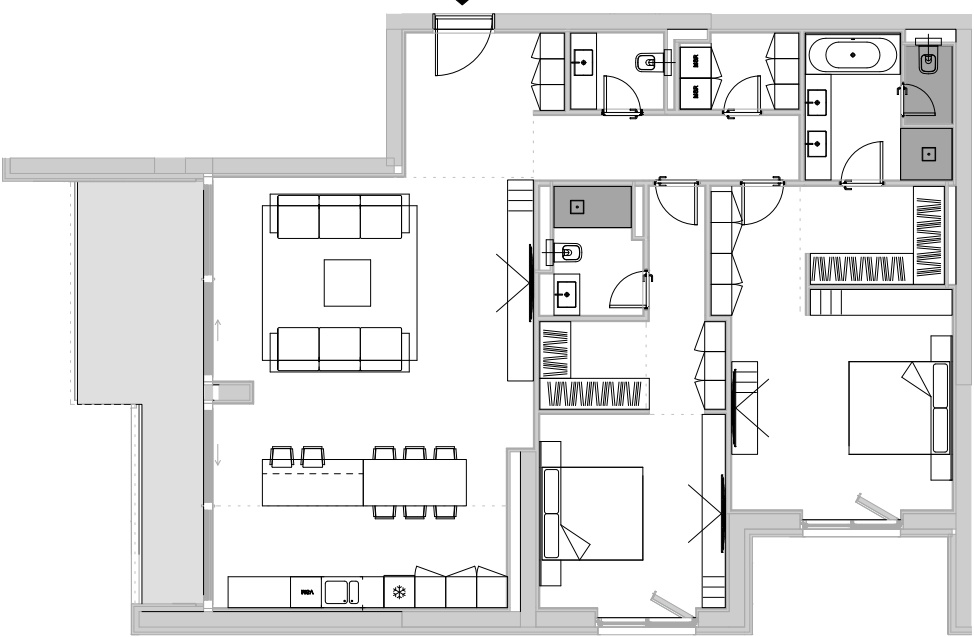


2nd floor Apartments

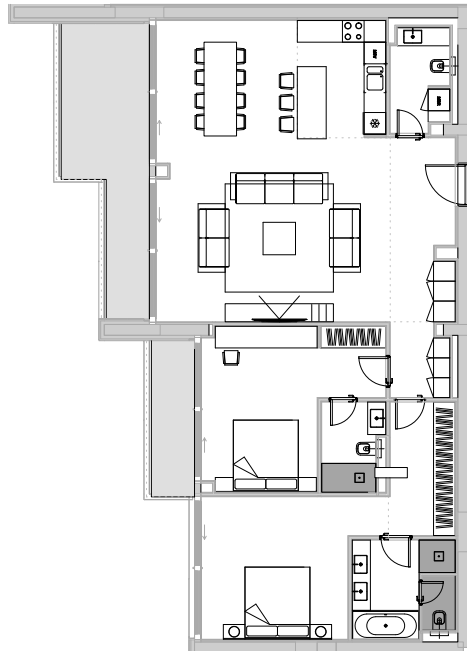
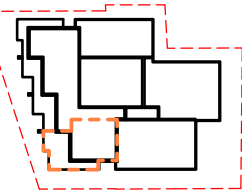
H

Apartment no. 20

| | |
|--------------------------|-------------------|
| 2nd floor | |
| 2 bedrooms | |
| AP. BUILT AREA: | 158.12 sqm |
| AP. USABLE AREA: | 132.21 sqm |
| TERRACE BUILT AREA: | 17.82 sqm |
| TERRACE USABLE AREA: | 16.32 sqm |
| TOTAL BUILT AREA: | 175.94 sqm |



2nd floor 2 bedroom spacious apartment with plenty of natural light and a private terrace.



Apartment no. 21

| | |
|--------------------------|-------------------|
| 2nd floor | |
| 2 bedrooms | |
| AP. BUILT AREA: | 144.28 sqm |
| AP. USABLE AREA: | 123.96 sqm |
| TERRACE BUILT AREA: | 24.40 sqm |
| TERRACE USABLE AREA: | 22.09 sqm |
| TOTAL BUILT AREA: | 168.68 sqm |

2nd floor 2 bedroom apartment, fully equipped with all the necessary modern facilities and a private terrace.



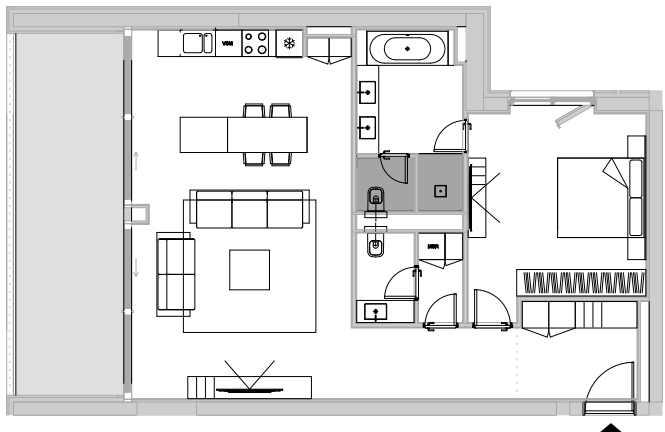
2nd floor Apartments

H

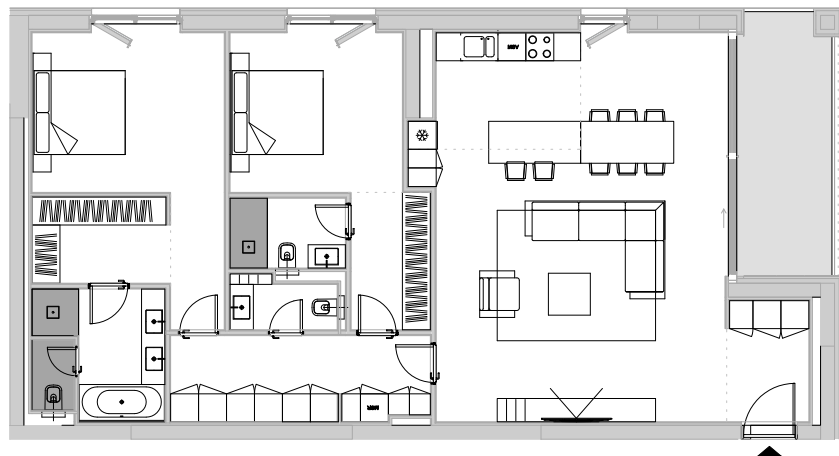
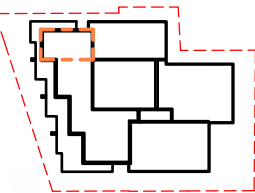
Apartment no. 22

2nd floor
1 bedroom

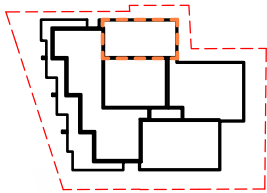
| | |
|--------------------------|-------------------|
| AP. BUILT AREA: | 103.27 sqm |
| AP. USABLE AREA: | 86.05 sqm |
| TERRACE BUILT AREA: | 24.49 sqm |
| TERRACE USABLE AREA: | 21.16 sqm |
| TOTAL BUILT AREA: | 127.76 sqm |



2nd floor 1 bedroom apartment with non-slip flooring, premium finishing materials and a private terrace.



2nd floor 2 bedroom luxury apartment with large windows and a private terrace to complement the serenity of your future home.



Apartment no. 23

2nd floor
2 bedrooms

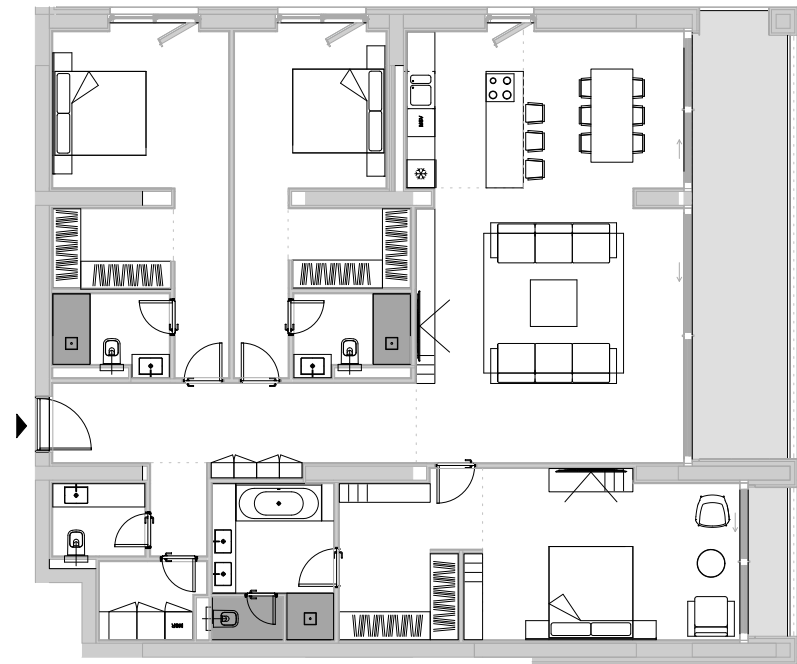
| | |
|--------------------------|----------------|
| AP. BUILT AREA: | 148.06 sqm |
| AP. USABLE AREA: | 122.78 sqm |
| TERRACE BUILT AREA: | 12.94 sqm |
| TERRACE USABLE AREA: | 12.02 sqm |
| TOTAL BUILT AREA: | 161 sqm |

2nd floor Apartments

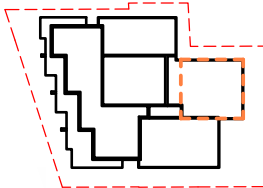
H

Apartment no. 24

| | |
|--------------------------|-------------------|
| 2nd floor | |
| 3 bedrooms | |
| AP. BUILT AREA: | 197.91 sqm |
| AP. USABLE AREA: | 164.67 sqm |
| TERRACE BUILT AREA: | 26.44 sqm |
| TERRACE USABLE AREA: | 23.77 sqm |
| TOTAL BUILT AREA: | 224.35 sqm |



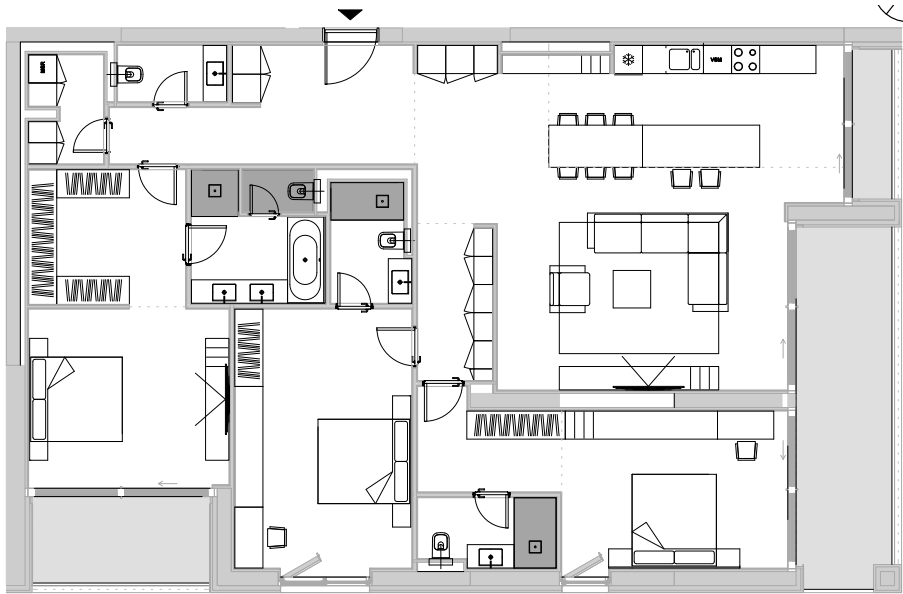
2nd floor 3 bedroom spacious apartment with private terrace and premium finishes.



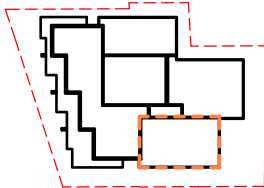
H

Apartment no. 25

| | |
|--------------------------|-------------------|
| 2nd floor | |
| 3 bedrooms | |
| AP. BUILT AREA: | 194.66 sqm |
| AP. USABLE AREA: | 165.46 sqm |
| TERRACE BUILT AREA: | 30.71 sqm |
| TERRACE USABLE AREA: | 27.14 sqm |
| TOTAL BUILT AREA: | 225.37 sqm |



2nd floor 3 bedroom luxury apartment with a peaceful private terrace.

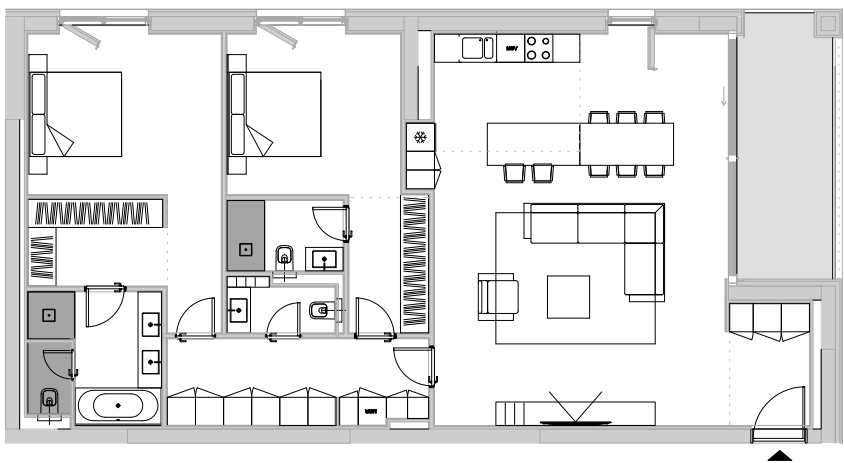


3rd floor Apartments

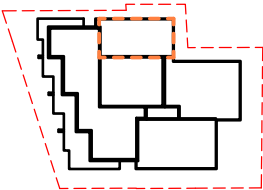
H

Apartment no. 26

| | |
|--------------------------|-------------------|
| 3rd floor | |
| 2 bedrooms | |
| AP. BUILT AREA: | 147.70 sqm |
| AP. USABLE AREA: | 122.76 sqm |
| TERRACE BUILT AREA: | 12.94 sqm |
| TERRACE USABLE AREA: | 12.15 sqm |
| TOTAL BUILT AREA: | 160.64 sqm |



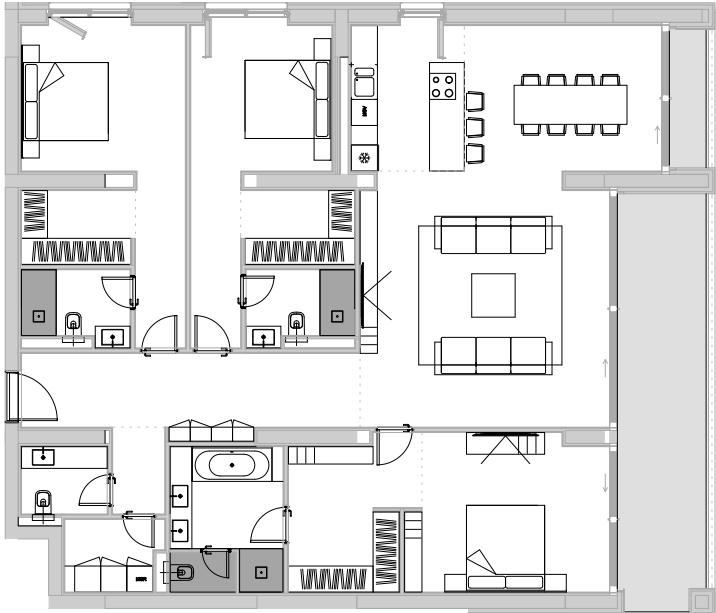
3rd floor 2 bedroom sophisticated and luxurious apartment with private terrace.



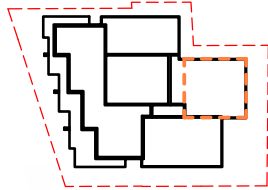
H

Apartment no. 27

| | |
|--------------------------|-------------------|
| 3rd floor | |
| 3 bedrooms | |
| AP. BUILT AREA: | 198.27 sqm |
| AP. USABLE AREA: | 164.69 sqm |
| TERRACE BUILT AREA: | 26.44 sqm |
| TERRACE USABLE AREA: | 23.77 sqm |
| TOTAL BUILT AREA: | 224.71 sqm |



3rd floor 3 bedroom apartment – a masterpiece of design, with exquisite floors, ceilings and a spacious terrace.



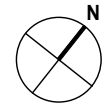
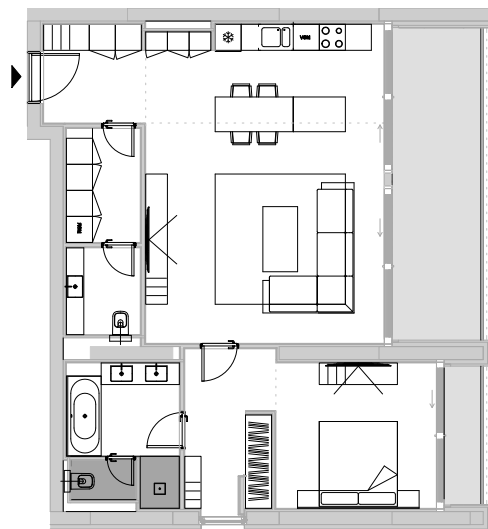
3rd floor Apartments

H

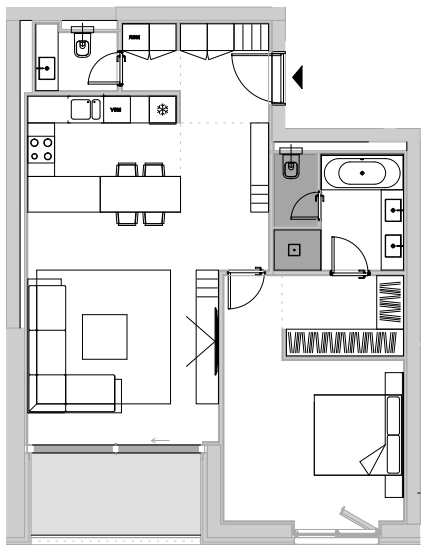
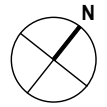
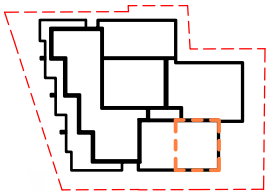
Apartment no. 28

3rd floor
1 bedroom

| | |
|--------------------------|-------------------|
| AP. BUILT AREA: | 98.64 sqm |
| AP. USABLE AREA: | 81.31 sqm |
| TERRACE BUILT AREA: | 20.82 sqm |
| TERRACE USABLE AREA: | 18.82 sqm |
| TOTAL BUILT AREA: | 119.46 sqm |



3rd floor 1 bedroom beautifully designed apartment with private terrace.

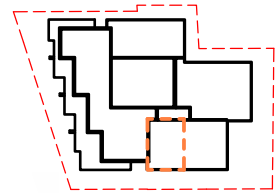


Apartment no. 29

3rd floor
1 bedroom

| | |
|--------------------------|------------------|
| AP. BUILT AREA: | 89.26 sqm |
| AP. USABLE AREA: | 74.80 sqm |
| TERRACE BUILT AREA: | 9.48 sqm |
| TERRACE USABLE AREA: | 7.54 sqm |
| TOTAL BUILT AREA: | 98.74 sqm |

3rd floor 1 bedroom apartment with private terrace, fully equipped with all the modern conveniences that your premium experience requires.



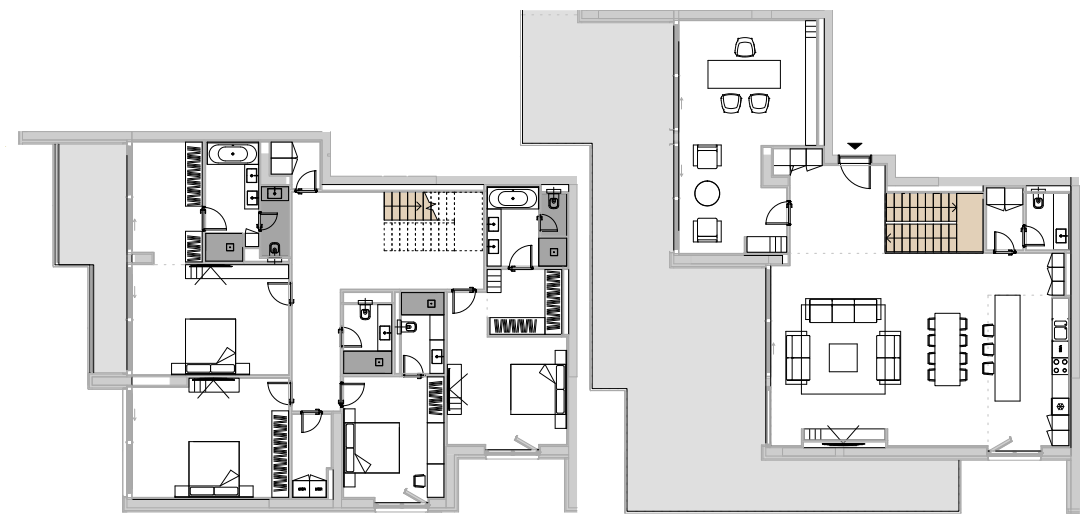
3rd - 4th floor Apartments

H

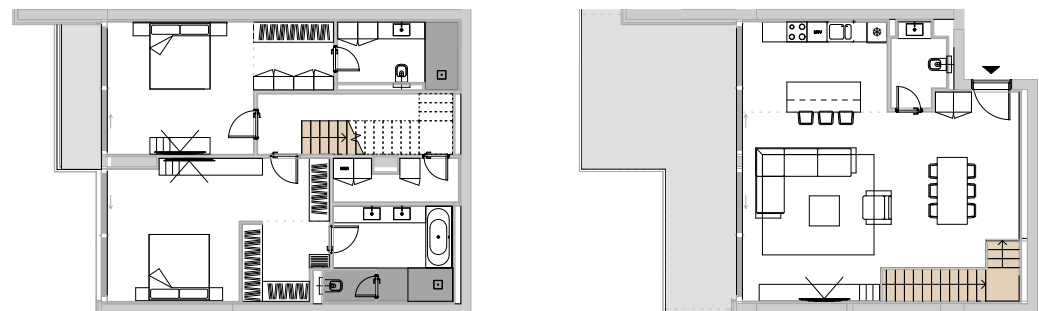
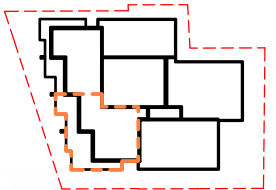
Apartment no. 30

3rd - 4th floor duplex
4 bedrooms

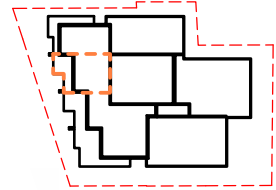
| | |
|--------------------------|-------------------|
| AP. BUILT AREA: | 345.15 sqm |
| AP. USABLE AREA: | 287.22 sqm |
| TERRACE BUILT AREA: | 188.9 sqm |
| TERRACE USABLE AREA: | 114.89 sqm |
| TOTAL BUILT AREA: | 464.05 sqm |



3rd - 4th floor 4 bedroom Duplex with private terrace, designed and executed according to the latest trends.



3rd - 4th floor 2 bedroom Duplex with private terrace, carefully chosen finishes and exclusive materials.



Apartment no. 31

3rd - 4th floor duplex
2 bedrooms

| | |
|--------------------------|-------------------|
| AP. BUILT AREA: | 164.07 sqm |
| AP. USABLE AREA: | 139.78 sqm |
| TERRACE BUILT AREA: | 36.19 sqm |
| TERRACE USABLE AREA: | 35.03 sqm |
| TOTAL BUILT AREA: | 200.26 sqm |

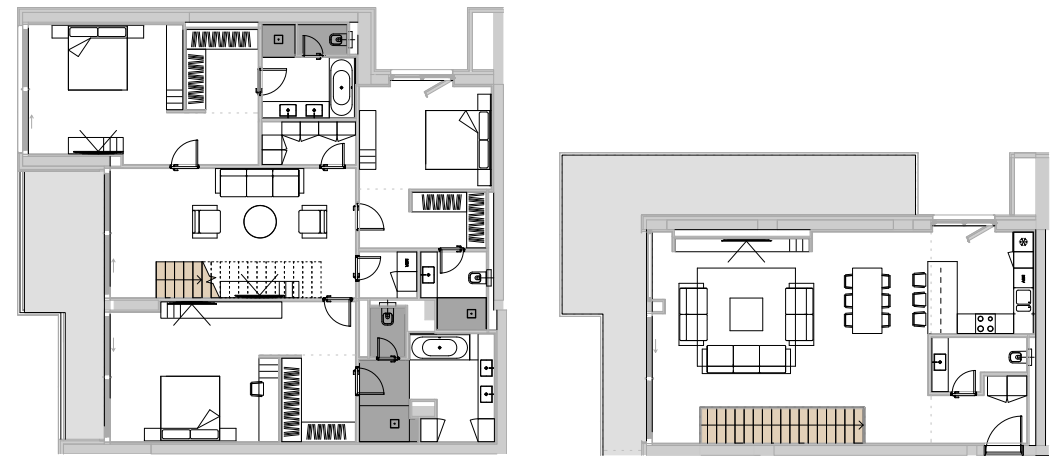
3rd - 4th floor Apartments

H

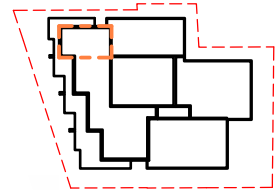
Apartment no. 32

3rd - 4th floor duplex
3 bedrooms

| | |
|--------------------------|-------------------|
| AP. BUILT AREA: | 253.08 sqm |
| AP. USABLE AREA: | 208.32 sqm |
| TERRACE BUILT AREA: | 52.44 sqm |
| TERRACE USABLE AREA: | 49.23 sqm |
| TOTAL BUILT AREA: | 305.52 sqm |



3rd - 4th floor 3 bedroom Duplex with plenty of natural light and a large private terrace for you to enjoy the outdoors.



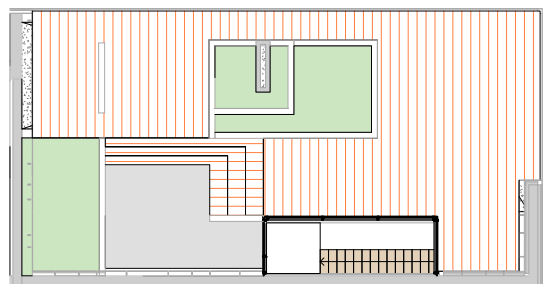
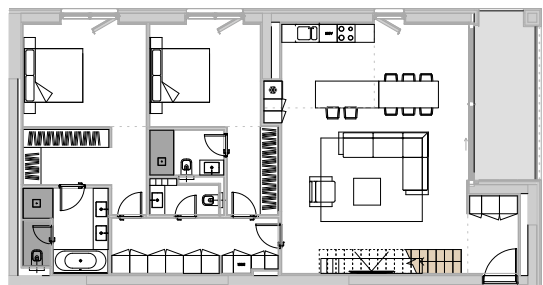
4th floor with rooftop terrace

H

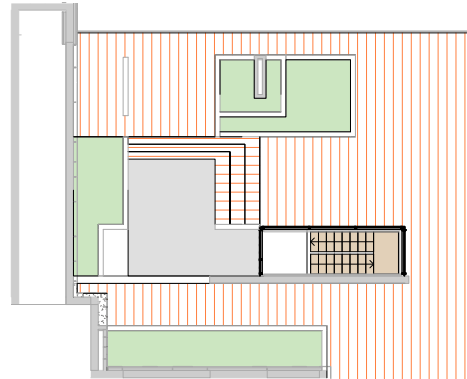
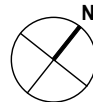
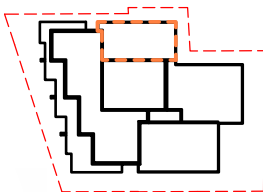
Apartment no. 33

4th floor with rooftop terrace
2 bedrooms

| | |
|--------------------------|-------------------|
| AP. BUILT AREA: | 148.06 sqm |
| AP. USABLE AREA: | 122.59 sqm |
| TERRACE BUILT AREA: | 12.94 sqm |
| TERRACE USABLE AREA: | 12.02 sqm |
| TERRACE E5 BUILT AREA: | 151.78 sqm |
| TERRACE E5 USABLE AREA: | 127.58 sqm |
| TOTAL BUILT AREA: | 312.78 sqm |



4th - 5th floor 2 bedroom luxury penthouse with panoramic terrace on top, combining premium and modern finishes with discreet classic details.

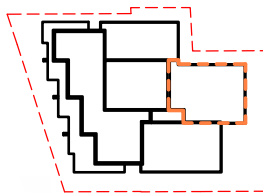


Apartment no. 34

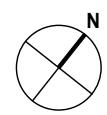
4th floor with rooftop terrace
3 bedrooms

| | |
|--------------------------|-------------------|
| AP. BUILT AREA: | 197.91 sqm |
| AP. USABLE AREA: | 164.67 sqm |
| TERRACE BUILT AREA: | 26.45 sqm |
| TERRACE USABLE AREA: | 23.77 sqm |
| TERRACE E5 BUILT AREA: | 235.26 sqm |
| TERRACE E5 USABLE AREA: | 187.87 sqm |
| TOTAL BUILT AREA: | 459.62 sqm |

4th - 5th floor 3 bedroom high-quality penthouse with panoramic terrace on top, defined by elegance and functionality.



4th floor with rooftop terrace



H

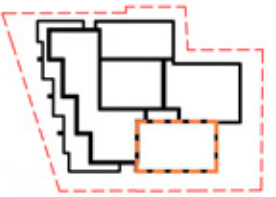
Apartment no. 35

4th floor with rooftop terrace
3 bedrooms

| | |
|--------------------------|-------------------|
| AP. BUILT AREA: | 194.66 sqm |
| AP. USABLE AREA: | 165.54 sqm |
| TERRACE BUILT AREA: | 30.71 sqm |
| TERRACE USABLE AREA: | 27.14 sqm |
| TERRACE E5 BUILT AREA: | 216.44 sqm |
| TERRACE E5 USABLE AREA: | 181.18 sqm |
| TOTAL BUILT AREA: | 441.81 sqm |



5th floor 3 bedroom amazing penthouse with panoramic terrace on top designed to inspire.





Your own 7 ★ H Eliade 9 apartment!



CONTACT

021 9085

sales@hagageurope.ro
www.heliade9.ro



All the materials, renderings, plans, surfaces, prices, finishes are for presentation purpose only, without creating any legal obligations neither for the developer nor for the client.
Their legal relationship will be governed solely by a valid contract between parties.



ELIADE 9

Your own 7★

021 9085
www.heliade9.ro

